

2019



COMMERCIAL STRENGTH
for **SOCIAL GOOD**



TRUST HOUSE™
TRUSTHOUSE.CO.NZ



ALLAN POLLARD CHIEF EXECUTIVE

We have implemented some significant changes to our business model over the last six years so it is all the more pleasing to report to our stakeholders that we have achieved record trading profit in the last financial year. Moreover, grants, charitable donations and sponsorships back to our communities are at levels never reported in our 70 year history.

The Trust House team worked extremely hard last year. Their diligence and commitment has enabled this organisation to exceed all of the financial benchmarks that were set at the start of the last financial year.

When tracking the last 5 years of the company, sales are down \$5.4 million and net profit pre donations is up \$7.6 million. This certainly illustrates a positive turnaround in overall Group performance.

We also continue to reinvest in our asset base with \$1.2 million for public housing and \$685k on the Copthorne Solway Park's redevelopment program both notable investments.

Whilst the Group's constant core purpose is to enhance the well-being of our communities, we reviewed and changed our vision to "Commercial Strength for Social Good." We feel that this better reflects the concentration of the company and the aspirations that we have for enhanced social good. The change was well received by our stakeholders and we appreciate their support.

The year ahead is set to be challenging with increases to the cost of doing business certain to impact both our bottom line and capital investment back to our community. We will work hard to ensure that we minimise any shortfall as a result of increased costs.

I would like to take this opportunity to thank our Senior team and all the staff at Trust House who do a great job whether they work in hospitality, housing or administration.

I thank Jock Kershaw, our Chairman, for his guidance and to all of the Directors of the company for the wise counsel that I have received throughout the year.

I also thank our communities for their continued support to Trust House businesses; the increase in support of our businesses and our brand has been impressive.

Thanks for your continued support.



DIRECTORS REPORT

PRINCIPAL ACTIVITIES

Trust House Limited is a community enterprise that owns and operates business units in the Wairarapa, Wellington, Kapiti, Tararua and Hawkes Bay regions. Its shareholders are Masterton Community Trust and Flaxmere Licensing Trust. Management services were provided to Trust House Foundation.

Trust House's shareholding comprises:

- Masterton Licensing Trust – 94.26%
- Flaxmere Licensing Trust – 3.97%
- Flaxmere Licensing (Charitable) Trust – 1.77%

The Group owns and operates 10 business units including:

- Licenced premises – hotels, restaurants, bars, cafés and bottle stores.
- A housing estate with some 485 homes to rent.
- A hydro-electricity scheme.

RESULTS FOR THE YEAR

It was a very positive year's trading. We are particularly pleased to report the significant improvement in our bars and restaurants segment which has been difficult for many years.

Cash flows (as detailed in the following table), and profits (detailed in the Operational Review) were sound and the financial position remains strong.

TABLE 1: CASH FLOWS GENERATED

YEAR	\$M
2019	7.414
2018	6.813
2017	5.969
2016	5.759
2015	3.482
2014	3.999

CHARITABLE DISTRIBUTION

The charitable distribution for the year was \$4.1 million and followed the traditional procedures: local elected representatives call for, or initiate, donations or projects in their areas, and then make the initial decisions on the extent of the grant. These recommendations are then approved, or not, by the Trust House Foundation. All the Regional Net Proceeds and Advisory Committees have established priorities for their communities and there is a high degree of openness, accountability and consultation.

The various reports in this document record the distribution made to each community.

DIRECTORS OF THE COMPANY AND REMUNERATION

The Directors, and the remuneration paid to them for the year ended 31 March 2019 was:

DIRECTOR	APPOINTED	\$
J W Kershaw (Chairman)	2007	52,000
D B Henry (Chair, Audit Committee)	2005	34,000
D J Baskerville	2011	32,000
L M Griffiths	2013	32,000
M Antonio	2017	24,000
Total		174,000

RELATIONSHIP WITH SHAREHOLDERS

There is an agreement with the shareholders that:

- Business plans will be presented in March each year for the financial year beginning 1 April.
- Reports on key events and trading compared to business plan targets will be presented quarterly.
- Annual accounts will be presented in July.
- Consultation will be undertaken during the annual appointment of two Directors.
- Discussion will occur on all major transactions and, where necessary, shareholder approval received.

There are strong and close links between the various Trusts and Trust House Limited.

AUDITORS

The Office of the Controller and Auditor-General has appointed Audit New Zealand to conduct the audit of Trust House Limited and its associated community and charitable trusts. Audit fees paid to Audit New Zealand for the year ended 31 March 2019 were \$98,090 for Trust House Group.

AUDIT AND RISK COMMITTEE

The members of the committee are DB Henry (Chairman), L Griffiths, JW Kershaw and DJ Baskerville. The Committee met six times during the year.

USE OF COMPANY INFORMATION

The Board received no notice during the year from Directors requesting to use Company information received in their capacity as Directors which would not have otherwise been available to them.

SHARE DEALING

No Director acquired or disposed of any interest in shares in the Company during the year.

INTEREST IN TRANSACTIONS

No Director is interested in any transaction (as defined by Section 139 of the Companies Act 1993) or proposed transaction with the Company.

CONCLUSION

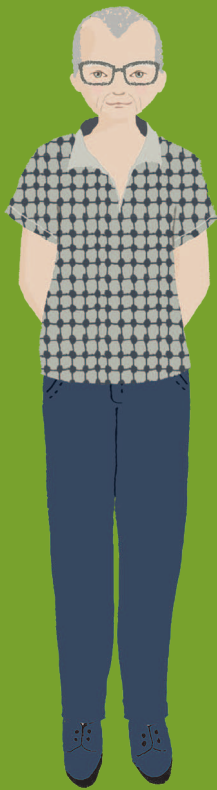
Grant, Charitable Donations and Sponsorship distributions of \$4.3 million for the year to 31 March 2019 reinforces the importance of the organisation to our communities.

We take management seriously with the 'at risk' products and services that we deliver to our communities and ensure that we have well trained staff who can minimise harm to ensure the well-being of our customers. This is our priority.

I am also pleased that, due to the work completed by management, we are now a recognised community housing provider. This means our tenants who qualify can now receive income related rent (IRR). In essence, this equates to more money in the pockets of our tenant's families. This I sincerely hope will improve their quality of life and was our aim when we registered. We now have 70 families or 14% of the housing portfolio receiving IRR. This will only grow in the year ahead.

The year produced an outstanding financial performance for the Group and one that we have worked for many years to achieve. Maintaining this level of performance is our aim, but the year ahead has some significant operational cost increases.

Directors are unanimous in their belief that it is imperative that the company remains financially strong so that it may offer real and tangible support to the communities in which we trade.



**JOCK
KERSHAW**
CHAIRMAN

OPERATIONAL REVIEW

It is pleasing to report to our communities that the Trust House Group has had another good year. A particular highlight was the significant increase to our trading profit to \$5.75 million. This is the highest reported trading profit by the Group in our 70 year history. It is a direct result of the many strategic changes that have been made over the last few years and the commitment and hard work of our staff and support and wise counsel from our Board.

We have adopted some minor changes to our strategic framework model, which is included in this report. You will also note that we have included a series of measurements. This will enable both staff and external stakeholders to objectively view our accomplishments in line with our planning.

Our strategic pillars for the current financial year are:

- Sustainable profitability
- Regulatory compliance
- Community well-being
- Systems and processes

The pillars assist in the advancement of our core purpose and further align our benchmark measurements to enable further enhancement of the communities in which we trade.

IN REGARDS TO OUR SEGMENTS:

Bars and Restaurants

The financial performance of this segment has vastly improved. We have had many legislative changes to manage over the last few years and there is no getting away from the fact that this segment of our business suffered as a result. This year the turnaround has been significant and is yet again becoming a key part of our business model.

The vast majority of our grants, charitable donations and sponsorship funding is generated from this segment. The Trust House Group has provided over \$4.3 million back to our communities and demonstrates the real social value being delivered as a direct result of our community owned assets.

Social responsibility with our products and services is another key area of focus for the Group and we strive to ensure that we manage liquor consumption responsibly, with both in house training for our staff and internal audit management important areas that we concentrate on to minimise harm.

Harm minimisation with class 4 gaming is another important area of focus, and we ensure that all staff receive ongoing training on the systems and processes that are critical in ensuring our customers are safe and that any issues of potential harm are managed with care and dignity.

Housing

Owning and operating some 485 public houses with an average age of 55 years is paradoxically challenging and rewarding.

We are pleased to report that our rents, on average, continue to be set at below the lower quartile benchmarks and that whilst rents in our trading areas have increased, we continue to maintain at below market levels for similar properties on both a local and national level.

We were also the first fully registered community housing provider in New Zealand. This enables our tenant's families and individuals who qualify to receive Income Related Rent, which will greatly reduce their rental payment, enabling more of their income to be available to improve their quality of life. It is pleasing to note that we now have 14% of our portfolio, or 70 tenancies, receiving IRR. This figure will grow in the future.

It should also be stated that our repairs and maintenance spend has increased in each of the last 5 years to \$1.2 million this financial year. We have increased the supply of public housing in the Masterton region for the people in our community most in need at a cost of \$1.4 million in 2017. The return on the new builds was low, but we believe that what we achieved for people in our community most in need far outweighs any financial benchmark that could be achieved in the commercial world.

Copthorne Resort Solway Park

The hotel has performed well throughout the year and has exceeded our forecasted expectations. Our GM, Jill Harrison, and the team have done a great job. We have noted an increase in our conference business which has been tepid over the last few years. This has enabled a good building block for the property.

We have also continued our refurbishment program, with the removal of asbestos, upgrading of the reception area and the relaying of a new carpet throughout the property being the major projects completed throughout the year.

Kourarau Hydro Scheme

The hydro scheme had a good year. The catalyst for this were some good increases to our spot rates due to low water levels in the South Island, maintenance at the Huntly power plant and some constraints in the coal and gas supplies.

We did have some damage to our spillway and land which we are currently working through, but in terms of overall performance, a very satisfying year.

OUR PLACES

Housing - some 485 properties Lower North Island

- The Flax - Flaxmere
- Post Office Hotel - Pahiatua
- The Farriers Bar & Eatery - Masterton
- Jackson Street Bar - Masterton
- Kuripuni Sports Bar and Apache Jack's - Masterton
- Copthorne Hotel and Resort Solway Park - Masterton
- Pukemanu Bar & Eatery, E10 and The Bottle O - Martinborough
- Legends Sport Bar - Porirua
- Kourarau Hydro Electric Scheme - Gladstone

FINANCIAL PERFORMANCE

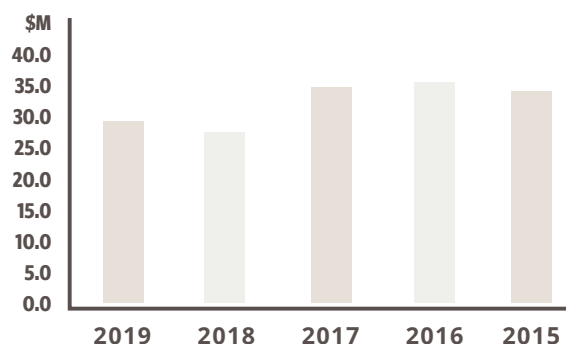
Sales

TABLE 1

YEAR	\$M
2019	29.3
2018	28.3
2017	35.4
2016	36.5
2015	34.7

The sales improvement in 2019 was spread throughout the various trading segments.

GROUP SALES



Profit and Ratios

TABLE 2

\$M	2019	2018	2017	2016	2015
Net profit before donations	12.480	11.136	9.540	6.455	4.868

The 2019 Group profit was the highest reported in our history. Whilst the revaluation in our assets played a significant part in our result, overall trading was again at record levels.

Equity (net worth)

TABLE 3

YEAR	\$M
2019	75.6
2018	67.2
2017	59.8
2016	53.6
2015	51.0

Equity Ratio

TABLE 4

YEAR	%
2019	76.6
2018	73.3
2017	70.4
2016	66.9
2015	65.1

Strong asset revaluations have assisted with some good equity numbers and ratios.

Community Support

TABLE 5

YEAR	\$M*
2019	4.38
2018	4.19
2017	3.82
2016	4.11
2015	2.32

*includes THF, THL Donations and sponsorships

We are very pleased to yet again deliver financial support back to our communities at levels not previously reported. This support is fundamental to the core purpose of the Group.

STRATEGIC FRAMEWORK

CORE PURPOSE

To enhance the well-being of our communities by:
Distributing profits in support of community organisations and events | Operating successful businesses that benefit from community ownership

VISION: Commercial strength for social good

PILLAR 1 Sustainable Profitability	PILLAR 2 Regulatory Compliance	PILLAR 3 Community Well-being	PILLAR 4 Systems and Processes
STRATEGIC OBJECTIVE 1: Maintain a financially stable Trust House for future generations.	STRATEGIC OBJECTIVE 2: To create a culture where failure is not an option.	STRATEGIC OBJECTIVE 3: To ensure that what we do is having a positive impact to our communities.	STRATEGIC OBJECTIVE 4: To ensure that all we do adds value to our markets, products and services.
MEASURES <ul style="list-style-type: none"> Deliver budgeted Group profit Develop Asset Management Plan Banking covenant above 2.5 	MEASURES <ul style="list-style-type: none"> No CPO failure No Class 4 failure Maintain CHP status All Health & Safety folders up to date and accurate All Food Hygiene folders up to date and accurate 	MEASURES <ul style="list-style-type: none"> To increase the year on year charitable donations, grants and sponsorship back to the communities in which we trade Community Engagement Survey 	MEASURES <ul style="list-style-type: none"> Deliver budgeted Group profit Staff Engagement Survey
ACTIONS <ul style="list-style-type: none"> Offer value for money products and services No operational outlets reporting cash losses Increase housing portfolio via regeneration of land and tenancy management contracts 	ACTIONS <ul style="list-style-type: none"> Grant management software Standardise internal audit procedures Company-wide commitment to adopting best practice Regular review of what we do 	ACTIONS <ul style="list-style-type: none"> Annual community surveys to measure the perception of Trust House and its businesses within the communities in which we trade Commitment to building relationships in our communities Publish high impact stories on the positivity of our grants, charitable donations and sponsorship have on our communities Review sponsorship and charitable donation strategy for impact in our community 	ACTIONS <ul style="list-style-type: none"> Implement Grant management software Standard operating procedures for all processes Automate retrieval of supplier's invoices from their website

VALUES: Respect | Innovation | Collaboration | Commitment | Humility

OPERATIONAL REVIEW

CONTINUED

Community Grants

TABLE 6: MAJOR GRANT RECIPIENTS REGIONS

RECIPIENT	PROJECT	AMOUNT
Destination Wairarapa	promote community physical and social wellbeing	\$161,886
Destination Wairarapa	promote community physical and social wellbeing	\$160,148
Wings over Wairarapa	assisting with costs of 2019 air festival - equipment hire	\$80,000
Aratoi Regional Trust	assisting with exhibitions costs for period 1 July 18 to 30 June 19	\$55,000
Maori Basketball New Zealand Inc	assisting with venue hire, transport and staffing costs needed to host International Indigenous Basketball and Cultural Tournament at Te Rauparaha Arena 22-30 March 2019	\$45,540
Hastings District Council	deliver learn to swim and Survive to Primary schools	\$25,000
Top Schools Cluster	purchase of computer laptops	\$35,000



COMMERCIAL STRENGTH
for **SOCIAL GOOD**

HEALTH AND SAFETY

We adopt an 'our people and our stakeholders come first' philosophy to all health and safety at Trust House.

The Board of Directors receive quarterly reports and audits on our health and safety initiatives and we regularly identify our top risks and how each one will be mitigated within the frameworks of policy and process.

Our Board and senior management visit outlets to ensure that individual health and safety processes are being managed appropriately.

All incidents of injury and near misses are reported at each Board meeting as this enables a transparent review process to occur in consultation with Directors.

We operate and review a significant hazard register regularly, and have quarterly companywide health and safety meetings with representatives from all business segments. The minutes of each meeting are distributed throughout the Group.

SUSTAINABILITY

We apply recycling initiatives throughout the Group and are committed to reducing energy consumption whenever possible.

Copthorne Resort Solway Park has also been awarded an Enviro-Silver standard, which requires that initiatives are in place to reduce energy, waste and water consumption.

We have, and will continue, to undertake a healthy homes programme which focuses on the insulation of our social housing. Currently we have some form of insulation in 89% of our properties. By July 2019 all Trust House social houses will be fully compliant with all regulatory state requirements for the insulation of our properties. As a point of note, only 29% of Trust House properties had some form of insulation when we purchased these properties from Housing New Zealand Corporation in 1999.

We continue to work on our open fire project and, by the end of 2019, there will be no open fires in our properties with most being replaced with heat pumps. As a point of note, in 1999 we had 396 open fires throughout our housing portfolio, currently we have 20 left to replace.

We have recently replaced two of our car fleet with hybrids in an effort to increase our focus on sustainability, this strategy will continue as our vehicle fleet changes over.

OUR PEOPLE

We continue to invest in the training of our people and last year the Group invested \$94,000 on this very important function. Concentration on customer service, cyber security, compliance and management development were essential areas of focus.

This year we have increased our training budget to better equip our staff with job specific skills, thus improving the competency of our workforce.

I am very lucky to have such a great group of staff to work with who diligently and skilfully perform their duties. The last few years have not been easy and I am very grateful for the support and loyalty that I receive each and every day, despite some of the significant business reengineering strategies that have been implemented.

The turnaround in organisational performance is unquestionably a result of our staff and the solid financial results that we continue to report is a credit to their effort and commitment.

REINVESTMENT

Whilst the reengineering of our business model to focus on core business has been a primary focus, we continue to reinvest back into our existing asset base.

Last year's major investments were:

- Minor capital improvements - \$446,000
- Solway Park refurbishment program- \$685,000
- Housing - \$702,882

STRATEGIC FOCUS

The major focus of the Group will be to ensure that we exceed the measurement benchmarks on our strategic framework. Do this, and we are certain that we will be delivering our core purpose.

We will also continue to upgrade the living standards of our housing portfolio. It is our aim to ensure that every house in our portfolio is warm, safe and secure.

Increasing the supply of housing to alleviate local demand from the members of our community most in need is another area that we are keen to pursue. We cannot do this alone and hope that central government will assist with our aspirations.

Building on the success of our bars and restaurants will remain a key area of focus and we have plans for some minor upgrades to further improve performance.

The Copthorne Resort Solway Park refurbishment program will continue with some earthquake strengthening and essential maintenance planned for the year ahead.

Thank you for supporting your community owned enterprise. We look forward to working with you in the coming years,

ALLAN POLLARD

CEO TRUST HOUSE LTD



TRUST HOUSE FOUNDATION

The Foundation has class 4 gaming venues from Hawkes Bay to Wellington and we are committed to giving back to the communities from which the funds are raised.

To do this we have four Regional Net Proceeds Committees whose members are voted in by their communities. These committees recommend grants to the Foundation. As the committees are made up of locally elected people, they have knowledge of their communities and are able to ensure the funds go to worthwhile projects.

AREAS	GRANTS AWARDED
Flaxmere	\$381,524
Rimutaka	\$239,885
Porirua	\$1,369,540
Masterton	\$2,243,430
TOTAL	\$4,234,379

Every year we grant funding to hundreds of initiatives that make living in our communities more social, more interesting, healthier and safer.

SPONSORSHIP

Trust House Ltd and its businesses also sponsor a range of events, clubs, individuals and activities that align with our core aim and reflect the diversity of our communities.

This last year they provided **\$258,544** worth of sponsorship back to the community.

OUR GAMING VENUES

- GREYTOWN HOTEL
- ISLAND BAY BAR
- KURIPUNI SPORTS BAR & TAB
- POST OFFICE HOTEL, PAHIATUA
- RIMUTAKA SPORTS BAR
- THE FARRIERS BAR & EATERY
- THE FLAX
- LEGENDS SPORTS BAR
- THE PUKEMANU BAR & EATERY
- JACKSON STREET BAR
- 888 SPORTS BAR

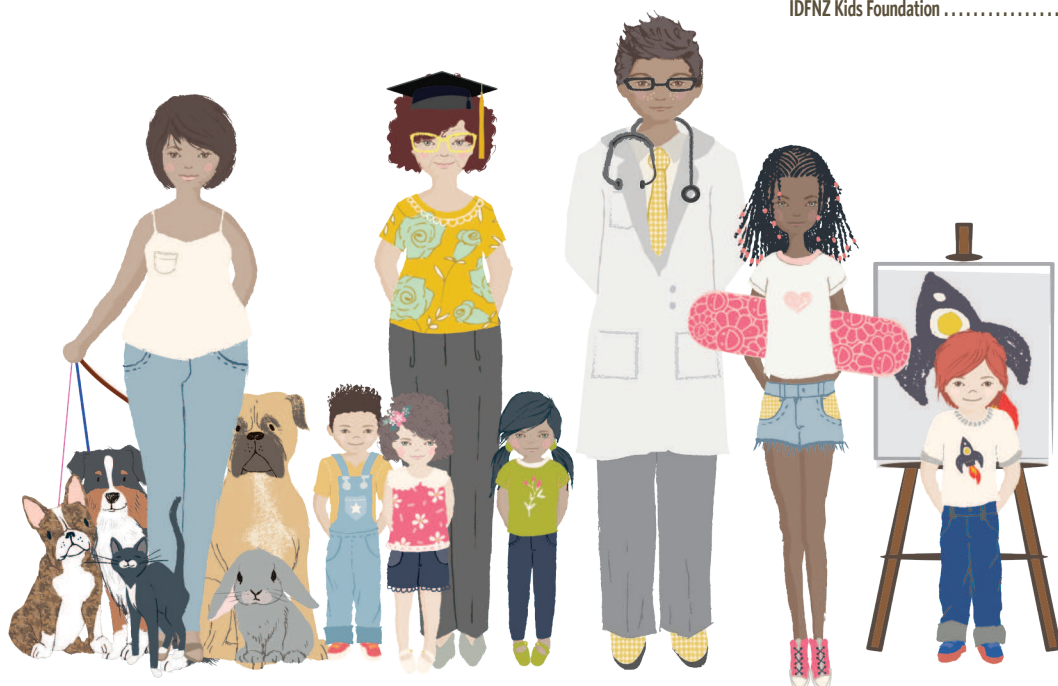
GRANTS

For the year ended 31 March 2019

ORGANISATION	GRANT
4 A Better City Charitable Trust	\$1,000
Access Radio Wairarapa Charitable Trust	\$5,000
Access Radio Wairarapa Charitable Trust	\$6,000
Adventure School	\$5,000
Age Concern Flaxmere Inc	\$7,500
Age Concern New Zealand Inc	\$1,675
Age Concern Wellington	\$3,000
Alfredton Domain Board	\$1,371
Alzheimers Society Manawatu	\$5,000
Alzheimers Wairarapa Inc	\$10,000
Aotea College	\$10,000
Aratoi Regional Trust	\$69,252
Arbor House Trust	\$7,500
Archdiocese of Wellington Plimmerton Parish	\$1,535
Arthritis Foundation of New Zealand	\$1,300
Arthritis Foundation of NZ (Inc)	\$2,000
Arthritis New Zealand	\$2,500
Arts Inc Heretaunga Inc	\$10,000
Asert-Tatou Development Trust	\$10,000
Athletics Masterton Inc	\$2,000
Athletics Wairarapa Inc	\$5,500
Autism New Zealand - Wellington and Wairarapa	\$4,000
Barnardos New Zealand	\$5,000
Bellyful New Zealand Trust Hutt Valley	\$900
Big Buddy Mentoring Trust	\$7,000
Birchleigh Polo	\$3,800
Birthright (HB) Child and Family Care Trust	\$3,000
Birthright (Hutt Valley) Trust	\$5,000
Birthright Wellington Inc	\$10,000
Bishop Viard College	\$8,024
Bowls Wairarapa Inc	\$3,500
Brain Injury Association Central Districts Inc	\$1,200
Brandon Intermediate Board of Trustees	\$4,084
Breakthrough Centre New Zealand	\$5,000
Breast Cancer Aotearoa Coalition Inc	\$1,000
Bridge Pa School	\$4,000
Bring It To Colombo Trust	\$55,000
Bush Multisports Trust	\$999
Bush Netball Club	\$3,619
Bush Sports Club Inc	\$6,000
Camp Quality Wellington/Central Districts	\$3,000
Cancer Society Wairarapa Dragon Boat Team Inc	\$4,000

ORGANISATION	GRANT
Cannons Creek Opportunity Centre	\$15,000
Cannons Creek School	\$6,850
Cannons Creek Youth Charitable Trust	\$5,000
Canteen Central	\$2,000
Canteen Hawkes Bay	\$2,000
Carterton Swimming Club Inc	\$2,000
Carterton Volunteer Fire Brigade	\$4,500
Castlepoint Fishing Club Inc	\$1,071
CCS Disability Action Wairarapa Inc	\$5,000
Central Districts Cricket Umpires and Scorers Assn	\$1,000
Central Sports Club	\$3,000
Central Wairarapa BMX Club Inc	\$7,500
Chamber Music New Zealand Trust	\$4,000
Chanel College Parents Teachers and Friends Association	\$6,000
ChangeAbility Inc	\$30,000
Child Cancer Foundation Inc	\$3,000
Citizens Advice Bureau Hastings Inc	\$6,000
College Sport Wellington	\$4,450
Come Sew With Me Ltd	\$2,000
Community Networks Wairarapa Inc	\$8,000
Compass Health	\$3,000
Connecting Communities Wairarapa Inc	\$5,090
Crisis Pregnancy Support Wairarapa Trust	\$3,000
Cystic Fibrosis Association of New Zealand	\$426
Dalefield Hockey Club	\$15,000
Dannevirke Amateur Swimming Club	\$1,000
Destination Wairarapa Inc	\$322,034
Deuce Days	\$2,400
Discovery School	\$5,000
Dress for Success Wellington	\$5,000
Dressage Wellington	\$3,000
East Coast Rugby Football Club Inc	\$1,000
Eketahuna Golf Club Inc	\$500
Eketahuna Home and School Association	\$2,000
English Language Partners NZ Trust - Porirua Centre	\$6,825
Environmental Education for Resource Sustainability Trust	\$3,078
Epilepsy Association of New Zealand Inc	\$5,000
Expressions Arts & Entertainment Centre	\$30,000
Fab Lab Masterton Trust	\$5,000

ORGANISATION	GRANT
Family Works Hawkes Bay (Presbyterian Support East Coast)	\$26,000
Featherston Amateur Wrestling Club Inc	\$4,000
Featherston Booktown Trust	\$18,000
Featherston Camp Memorial Trust	\$4,800
Featherston Heritage Complex Society Inc	\$500
Featherston Hockey Club Inc	\$2,000
Featherston Toy Library Inc	\$1,000
Festival of the Elements	\$9,900
First Titahi Bay Scout Group	\$6,300
Flaxmere Baptist Church Community Trust	\$4,500
Flaxmere Mana Wahine Softball	\$2,000
Foureyes Foundation	\$37,516
Friends of the ANZAC Bridge	\$2,500
Friends of the Hospital	\$2,000
Gladstone Womens Hockey Club	\$500
Golden Shears International Shearing Championships Society Inc	\$40,000
Greenacres School	\$2,538
Greytown Lioness Club	\$850
Greytown Menz Shed	\$3,200
Greytown Netball Club Inc	\$2,000
Greytown Sport & Leisure Society Inc	\$7,500
Greytown Volunteer Fire Brigade	\$10,000
Hampton Hill School	\$3,320
Hanley Productions Ltd	\$5,000
Hastings Art and Culture Trust	\$2,000
Hastings District Council	\$50,000
Hastings Foodbank Trust	\$5,000
Hastings Group Riding for the Disabled	\$5,000
Hastings Hibernian Hibernian AFC Inc	\$6,000
Hastings West Ross Shield	\$2,645
Hau Arika Marae	\$24,000
Hawaiki Nui Tua Rua Waka Ama Club	\$4,995
Hawkes Bay Basketball Foundation Inc	\$5,000
Hawkes Bay Community Fitness Centre Trust	\$15,000
Hawkes Bay Youth Trust	\$4,000
He Kahui Wairarapa Inc	\$3,000
Henley Mens Shed Inc	\$4,000
Heretaunga Kindergarten Association Inc Peterhead Kindergarten	\$4,398
Heretaunga Players Inc	\$2,078
Heretaunga Women's Centre	\$3,000
Holy Family School	\$8,000
Hurunui-o-Rangi Charitable Trust	\$15,000
IDFNZ Kids Foundation	\$2,000



GRANTS CONTINUED

ORGANISATION	GRANT	ORGANISATION	GRANT	ORGANISATION	GRANT
Irongate School.....	\$4,000	Masterton Family Education and Support Centre.....	\$3,000	Porirua City Tag.....	\$5,000
Island Bay Bowling Club Inc.....	\$22,000	Masterton Intermediate School.....	\$15,000	Porirua City United Softball Club Inc.....	\$1,000
Island Bay Enhancement Trust.....	\$3,000	Masterton Loved 4 Life Chapter 11.....	\$2,500	Porirua College Board of Trustees.....	\$25,000
Island Bay Natural Heritage Charitable Trust Inc.....	\$7,810	Masterton Motorplex Inc.....	\$24,000	Porirua Community Arts Council Inc.....	\$5,000
Island Bay Softball Club Inc.....	\$3,446	Masterton Racing Club Inc.....	\$5,000	Porirua Foundation Inc.....	\$22,000
Island Bay United AFC.....	\$36,500	Masterton Red Star Rugby Club.....	\$5,000	Porirua Grand Traverse Trust.....	\$20,000
Island Bay United Junior Soccer.....	\$20,000	Masterton Squash Club.....	\$3,000	Porirua Healthy Safer City Trust.....	\$10,000
It Takes Time.....	\$1,500	Masterton Swimming Club Inc.....	\$5,000	Porirua ITF Tae Kwon Do.....	\$9,412
Jazz in Martinborough.....	\$3,000	Menzshied Pahiatua.....	\$1,150	Porirua Living Without Violence.....	\$8,000
Judgeford Golf Club Inc.....	\$1,500	MS Primary Schools Sports.....	\$1,750	Porirua Primary Schools Sports Association.....	\$1,650
Kapi Mana Netball Centre.....	\$28,923	Napier Civic Choir Inc.....	\$1,000	Porirua Rowing Club.....	\$10,000
Kerry Fundraisers.....	\$2,000	New Zealand Barbarians Tag Football Inc.....	\$15,000	Porirua Tag NZTFFI Reps.....	\$15,000
Kia Kaha Hockey Club Inc.....	\$2,500	New Zealand Choral Federation - Wellington Region.....	\$2,500	Presbyterian Support Central.....	\$7,500
Kidscan Charitable Trust.....	\$10,000	New Zealand Equestrian Federation Inc - Wairarapa.....	\$10,000	Prima Volta Charitable Trust.....	\$7,000
Kidz Need Dadz.....	\$1,500	New Zealand Myanmar Ethnic Council Inc.....	\$3,175	Prisoners Aid & Rehabilitation Society of the MTU District.....	\$3,000
Kidz Need Dadz Charitable Trust HB Inc.....	\$2,000	New Zealand Suzuki Institute - Wellington Branch.....	\$800	Pukaha Mount Bruce Board.....	\$60,000
Kidz Need Dadz Wellington.....	\$900	Ngati Kahungunu Iwi Inc.....	\$11,000	Pukerua Bay School.....	\$2,398
King Street Artworks Inc.....	\$13,000	Ngati Toa School.....	\$11,000	Purena Koa Rehua Youth Services.....	\$7,664
King Street Artworks Inc.....	\$20,000	Ngatitoa Tennis Club Inc.....	\$3,000	Red Star Cricket Club.....	\$2,500
KittyCat Rehoming Wairarapa.....	\$1,000	Northern United Rugby Football Club Inc.....	\$70,000	Red Star Squash Club.....	\$10,000
Kiwi Community Assistance Charitable Trust.....	\$14,764	NZ Council of Victim Support Groups - Wairarapa.....	\$3,923	Red Star Womens Hockey.....	\$800
Kopuaranga Hall Society Inc.....	\$2,000	NZ Council of Victim Support Groups Hastings.....	\$2,500	Redwood School.....	\$800
Kupa International Training Centre.....	\$2,396	NZ Council of Victim Support Groups Porirua.....	\$3,000	Riding for the Disabled Association	
La Leche League Mana North.....	\$5,074	NZ Riding For The Disabled Association Inc.....	\$6,728	Hutt Valley Group Inc.....	\$7,500
Lakeview School Board of Trustees.....	\$23,213	Ocean Beach Kiwi Surf Life Saving Club Inc.....	\$2,500	Rimutaka Gymsports Inc.....	\$3,620
Lansdowne Cricket Club Inc.....	\$2,500	Ole Soccer Academy.....	\$20,000	Rimutaka Incline Railway Heritage Trust.....	\$9,200
Learning Disabilities Assn Wai Inc.....	\$3,500	Opaki Netball Club.....	\$960	Rimutaka Inline Hockey Club Inc.....	\$3,000
Leg-Up Trust.....	\$20,000	Opaki School Board of Trustees.....	\$4,000	Rimutaka Steppers Leisure Marchers.....	\$3,900
Life Education Trust Wairarapa Tararua and Central Hawkes Bay.....	\$12,500	Outward Bound Trust of New Zealand.....	\$17,142	Riversdale Beach Surf Lifesaving Club Inc.....	\$5,115
Lions Club of Mana Charitable Trust.....	\$13,643	Pacific Heat Sports Club.....	\$1,950	Road Safety Education Ltd.....	\$2,500
Lions Club of Martinborough Charitable Trust.....	\$1,000	Paharakeke Sports Club Inc.....	\$2,500	Ronald McDonald House Charities	
Louise Perkins Foundation - Sweet Louise.....	\$1,000	Pahiatua Community Services Trust.....	\$20,000	New Zealand Trust.....	\$5,000
MAC Sports Association Inc.....	\$8,000	Pahiatua Football Club.....	\$1,800	Rotary Club of Masterton Charitable Trust.....	\$22,800
Mahinawa Specialist School and Resource.....	\$2,777	Pahiatua Golf Club Inc.....	\$10,000	Royal New Zealand Plunket Society Inc.....	\$12,000
Mahunga Golf Club Inc.....	\$5,000	Pahiatua Railcar Society Inc.....	\$4,450	Royal New Zealand Society for Prevention of Cruelty to Animals.....	\$11,000
Makoura College Board of Trustees.....	\$22,000	Pahiatua School Board of Trustees.....	\$4,503	Ruahine Kindergartens Assn - Holyoake Kindergarten.....	\$2,000
Makoura Community Early Childhood Centre.....	\$8,000	Paremata Plimmerton Softball Club.....	\$2,739	Russell School.....	\$3,600
Mana Amateur Athletic Club.....	\$3,439	Parent To Parent New Zealand Inc		Scout Association of NZ - Hutt Valley	
Mana College.....	\$10,000	Manawatu.....	\$1,000	Gang Show.....	\$7,500
Mana Kayak Racing Club Inc.....	\$10,000	Parents-R-Us.....	\$5,000	Seniornet Upper Hutt Inc.....	\$2,358
Mana Marlins Masters Swim Club Inc.....	\$1,500	Parkinson's New Zealand.....	\$15,000	Sexual Abuse Prevention Network.....	\$2,618
Mana Special Needs Childrens Trust.....	\$20,000	Partners Porirua Charitable Trust.....	\$8,000	Skylight.....	\$1,299
Mana Squash Rackets Club Inc.....	\$5,000	Paul Henare & Paora Winitana Basketball Trust.....	\$19,800	Solway College.....	\$5,000
Mana Volunteer Coastguard Inc.....	\$15,000	Pioneer Rugby Football Club Inc.....	\$2,000	Solway School.....	\$1,000
Manawa Karioi Society Inc.....	\$8,396	Plateau School.....	\$2,000	Soul City Church Trust.....	\$10,000
Maori Basketball New Zealand Inc.....	\$45,540	Plimmerton Bowling Club Inc.....	\$5,000	South Wairarapa Pony Club Inc.....	\$1,000
Marist Old Boys.....	\$1,725	Plimmerton Croquet Club Inc.....	\$10,000	Special Olympics Mana.....	\$53,276
Marist Rugby Football Club Masterton Inc.....	\$3,000	Plimmerton Residents' Association Inc.....	\$26,750	Special Olympics Wellington.....	\$1,380
Martinborough Music Festival.....	\$3,500	Poneke Kilbirnie Softball Club Inc.....	\$5,350	SPELADD NZ Inc.....	\$1,200
Martinborough Rugby Football Club Inc.....	\$5,000	Porirua Basketball Association.....	\$20,000	Spirit of Adventure Trust.....	\$10,000
Martinborough Youth Trust.....	\$1,000	Porirua City Aquatics Inc.....	\$3,000	Sport Wellington.....	\$10,000
Mary Potter Hospice.....	\$20,000	Porirua City Band Youth Trust.....	\$1,860	Sri Lanka Association of New Zealand (SLANZ) Inc.....	\$1,000
Masterton A & P Association.....	\$18,000	Porirua City Classic Touch.....	\$5,000	St Francis Xavier School.....	\$10,000
Masterton Association Football Club Inc.....	\$1,500	Porirua City Community IT Education Trust Inc.....	\$10,000	St George Rugby League Football Club.....	\$27,421
Masterton Bridge Club.....	\$9,000	Porirua City Council.....	\$45,000	St Joseph's at Riversdale Beach Charitable Trust.....	\$18,000
Masterton Community Church.....	\$2,500			St Matthews Collegiate School.....	\$3,500
Masterton Community Toy Library Inc.....	\$2,000			St Patrick's Primary School (Masterton) Board of Trustees.....	\$5,000
Masterton District Council.....	\$29,500				
Masterton Eketahuna Pro-am.....	\$4,000				

ORGANISATION	GRANT
St Pius X School	\$6,689
St Theresa's School Board of Trustees	\$10,000
Starjam Charitable Trust	\$5,000
Summer Shakespeare Production	\$2,500
SuperGrans Charitable Trust	\$5,000
Swim Hawkes Bay	\$2,500
Takitimu District Maori Wardens Trust	\$5,000
Tamatea Rugby League Club Inc	\$7,000
Tararua College Board of Trustees	\$3,237
Tararua Family Services	\$10,000
Tawa College Board of Trustees	\$7,562
Tawa Hockey Club Inc	\$1,000
Tawa Intermediate School	\$4,294
Tawa Lyndhurst Tennis Club Inc	\$5,000
Tawa School Board of Trustees	\$2,800
Tawa Squash Club Inc	\$4,200
Tawalin Indoor Bowls Club	\$1,000
Te Awhina Cameron Community House Inc	\$35,000
Te Kura Kaupapa Maori o Wairarapa	\$13,000
Te Tai Timu Trust	\$3,500
Te Whare Tiaki Wahine Refuge	\$5,000
The Black Grace Trust	\$10,000
The Carter Society Inc	\$50,000
The Catwalk Trust	\$4,000
The Cranford Hospice Trust	\$20,000
The Duke of Edinburgh's Hillary Award	\$4,660
The Family Space Charitable Trust	\$750
The Friends of Cobblestones	\$2,000
The Hearing Association - Hastings Branch Inc	\$5,000
The House of Grace Trust Inc	\$3,000
The Lighthouse Church Charitable Trust	\$15,000
The Limit (Hawkes Bay) Trust	\$1,600
The Lions Club of Featherston Charitable Trust	\$1,800
The Mauriceville/Kopuaranga Fair Assn Inc	\$1,000
The National Heart Foundation of NZ - Masterton Branch	\$4,000
The Parenting Place	\$3,313
The Parenting Place - Attitude Division	\$1,384
The Parenting Place - Attitude Youth Division	\$1,000
The Scout Association of New Zealand	\$8,000
The Songbirds	\$1,500
The Swimming Trust of Wellington	\$2,000
The Upper Hutt Highlanders Inc	\$5,000
The Wairarapa Community Health Trust	\$50,000
The White Ribbon Campaign Trust	\$4,000
Titahi Bay Amateur Athletics Club	\$20,000
Titahi Bay Boating Club Inc	\$4,700
Titahi Bay Marlins RLC	\$33,865
Titahi Bay North School	\$5,000
Titahi Bay Surf Life Saving Club Inc	\$20,000
Titahi Golf Club Inc	\$20,000
Toa Waka Ama Inc	\$10,000
Top Schools Cluster	\$35,000
Trentham Boxing Club	\$1,184
Trentham United Harriers and Walkers Club Inc	\$5,000

ORGANISATION	GRANT
Upper Hutt Animal Rescue Society Inc	\$3,000
Upper Hutt City Council	\$2,000
Upper Hutt City of Song Charitable Club	\$23,198
Upper Hutt Community Youth Trust	\$6,000
Upper Hutt Foodbank Inc	\$10,000
Upper Hutt Housing Trust	\$3,187
Upper Hutt Multicultural Council Inc	\$4,000
Upper Hutt Musical Theatre Inc	\$2,040
Upper Hutt Women's Centre Inc	\$17,000
Virtuoso Strings Charitable Trust	\$15,000
Vixens Sports Club	\$1,500
Volleyball NZ	\$3,000
Waiapu Anglican Care - Growing Through Grief HB	\$5,000
Wairarapa Agricultural & Pastoral Society Inc	\$7,000
Wairarapa Arts Festival Trust	\$25,000
Wairarapa Balloon Society Inc	\$28,000
Wairarapa Bike Festival Charitable Trust	\$3,000
Wairarapa Branch of The Vintage Car Club	\$3,000
Wairarapa Bush Rugby Football Union Inc	\$50,000
Wairarapa Cancer Society Inc	\$16,000
Wairarapa Citizens Advice Bureau	\$3,700
Wairarapa College	\$7,000
Wairarapa College Sports Foundation	\$20,000
Wairarapa Community Centre Inc	\$3,000
Wairarapa Cricket Association Inc	\$23,000
Wairarapa Diamonds Leisure Marching Team	\$1,000
Wairarapa Embroiders Guild	\$500
Wairarapa Endurance and Competitive Trail Riding Club	\$2,500
Wairarapa Fern & Thistle Pipe Band	\$1,905
Wairarapa Free Budget Advisory Services	\$16,000
Wairarapa Harness Racing Club Inc	\$3,000
Wairarapa Hockey Association Inc	\$29,000
Wairarapa Inter-Collegiate Speech Competition	\$1,300
Wairarapa Kennel Association Inc	\$1,514
Wairarapa Mathematics Association	\$1,500
Wairarapa Racing Club Inc	\$17,000
Wairarapa REAP	\$75,000
Wairarapa Spitfires Baseball Club Inc	\$5,000
Wairarapa Summer Shakespeare Charitable Trust	\$4,500
Wairarapa Track and Field Inc	\$9,000
Wairarapa United Football Club Inc	\$65,000
Wairarapa Welsh Pony and Cob Show Group	\$500
Wairarapa Women's Centre	\$1,594
Wairarapa Youth Charitable Trust - Wairarapa Boxing Academy	\$30,000
Waiwaste Inc	\$10,000
Wellfed NZ Trust	\$30,000
Wellington City Mission Anglican Trust Board	\$41,000
Wellington Free Ambulance Service Inc	\$20,000
Wellington Hospitals Foundation	\$5,000
Wellington Kart Club Inc	\$7,920
Wellington Museums Trust Inc	\$5,000
Wellington North Badminton Association Inc	\$5,000

ORGANISATION	GRANT
Wellington Regional Asthma Society Inc	\$5,000
Wellington Riding For The Disabled Assn Inc	\$15,000
Wellington Rugby Football Union Inc	\$5,000
Wellington Samoa Rugby Union	\$16,000
Wellington Sexual Abuse HELP Foundation	\$5,000
Wellington Swimming Association	\$17,500
Wellington Vintage Machinery Inc	\$20,800
Wellington Volunteer Centre	\$12,000
Wesley Wellington Mission Inc	\$10,000
Western Suburbs Rugby and Sports Club	\$6,657
Western Suburbs Soccer Club	\$20,000
Whaioara Whanui GP Services	\$4,500
Whakaoriori Land and Air Scout Group	\$10,000
Whanau Manaaki Kindergartens - Ascot Park	\$3,500
Whanau Manaaki Kindergartens - Brian Webb	\$3,000
Whanau Manaaki Kindergartens - Doris Nicholson	\$1,500
Whanau Manaaki Kindergartens - Maraeroa	\$3,000
Whanau Manaaki Kindergartens - Moira Gallagher	\$1,100
Whanau Manaaki Kindergartens - Paremata	\$1,500
Whanau Manaaki Kindergartens - Pukerua Bay	\$2,500
Whanau Manaaki Kindergartens - Tawa Central	\$2,506
Whanau Manaaki Kindergartens - Tui Park	\$3,190
Whanau Manaaki Kindergartens Island Bay	\$4,320
Wharariki (Flax) Trust	\$10,000
Whareama School	\$3,000
Whitby Tennis Club	\$3,000
Whitireia Community Law Centre Trust	\$30,000
Whitireia Community Polytechnic - Childcare Centre	\$5,000
Wings Over Wairarapa Community Trust	\$80,000
WOOPS A Daisies Leisure Marching Team	\$1,000
Y M C A Hawkes Bay Inc	\$4,000
Yarns in Barns Wairarapa Festival of Reading	\$4,000
YMCA of Greater Wellington Inc	\$6,000
Youth Development Trust Wellington	\$5,000
Zeal Education Trust (Hawke's Bay)	\$6,000

ARTS
\$424,890

COMMUNITY
\$971,042

EDUCATION
\$558,355

HEALTH
\$841,077

**RECREATION &
SPORT**
\$1,439,015

total
\$4,234,379

COMMERCIAL STRENGTH
for **SOCIAL GOOD**

SENIOR MANAGERS

ALLAN POLLARD

CHIEF EXECUTIVE

CINDRA GRANT

GENERAL MANAGER, OPERATIONS
& COMPLIANCE

CRAIG THOMSON

GENERAL MANAGER, HOUSING
& INFRASTRUCTURE

LESLEY WRIGHT

EXECUTIVE ADMINISTRATOR

RICHARD SIMMONDS

GENERAL MANAGER, CORPORATE SERVICES



TRUST HOUSE FOUNDATION TRUSTEES

JOCK KERSHAW CHAIRMAN

KEN KIBBLEWHITE

KARL TAUCHER

LITEA AH HOI

LUCY GRIFFITHS

MENA ANTONIO

TOM JONES

TRUST HOUSE LIMITED DIRECTORS

JOCK KERSHAW CHAIRMAN

DAVID HENRY

DONALD BASKERVILLE

MENA ANTONIO

LUCY GRIFFITHS





TRUST HOUSE^{LTD}

TRUSTHOUSE.CO.NZ

