

COMMERCIAL STRENGTH FOR SOCIAL GOOD



TRUST HOUSE LTD
AND TRUST HOUSE FOUNDATION
*Annual
Report* **2017**

COMMERCIAL STRENGTH FOR SOCIAL GOOD

As a community owned company it is vitally important that we work hard to ensure we enhance the well-being of our communities. This is, after all, the primary objective of the organisation. To advance this aim we believe that first and foremost we must, as an organisation, be commercially strong to do social good.

We have worked hard over the last few years to streamline our assets, both tangible and intangible, to better align the organisation's skills and resources. We have and will continue to relentlessly focus on our core business and exit those parts of our business model that do not meet our core criteria, or are dragging the chain in our advancement of commercial strength. This year's Trust House Limited operational surplus including discontinued operations of \$3.09 million and Trust House Group operating profit including discontinued operations of \$6.56 million are strong results and testimony to the strategies that we have adopted.

Returns back to our communities via grants, charitable donations and sponsorships were over \$3.8 million in the financial year. This is a fantastic result for our communities, but we want to do more and will work hard to continually increase the value that we deliver.

Social and affordable housing has been a major focus throughout the year and we increased the level of commitment that we deliver to asset improvements by another \$50k. We therefore invested over \$1.2 million on this important asset and will increase this again in the coming year.

Recently we reported a housing regeneration program that was approved by our Board. This will enable 8 new properties to be built on existing land to meet market demands in our region. We envisage further projects in the coming years.

We have added two new pubs to our portfolio with the Post Office Hotel and Jackson Street Bar now part of our family. These important acquisitions will add some real value to the Group over time.

In general, the on premise market returns have improved from previous years, but we must continue to work hard to ensure that we are always one step ahead of the competition.

Copthorne Resort Solway Park has had a change in management and also had a good year, despite the national trend of a reduction in conference business, but we did report an increase in our inbound tour market with Chinese visitors now enjoying the Wairarapa experience. The Board has also approved a \$2.5m refurbishment project for the property over the next 5 years. This is an exciting project and one that will ensure that this asset is adding value to our community for many more years.

In the last year we reported the sale of Greytown Hotel, Empire Tavern, Flaxmere Bottlestore and Featherston Gateway. We also recently announced the sale of our bottle stores in Feilding and Pahiatua. With the completion of these sales we have all but completed the asset reshuffle that was a necessity to build a sustainable future for the Group.

The year ahead will be very positive for the Trust House Group; we forecast an increase in operating profit and further increases to the grants and sponsorships that we deliver back to our communities. This, I am sure you will agree, is further evidence that commercial strength can in fact equate to social good.

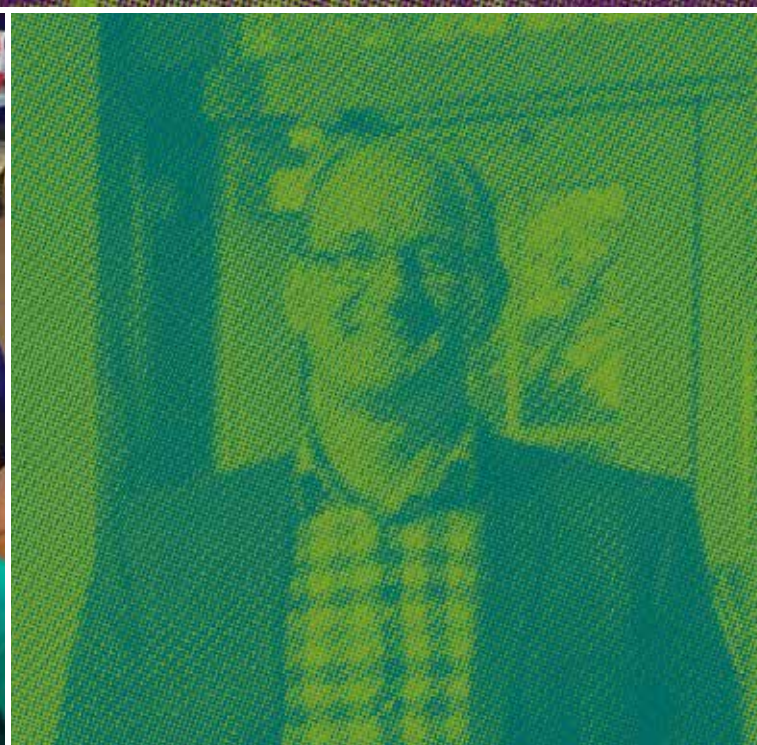
I also take this opportunity to thank Jock Kershaw our Chairman and the Directors and elected Trustees of the Trust House Group for their unwavering support as we implemented many difficult strategies. I appreciate their wise counsel and their willingness to debate and challenge management as we deliver our products to market. This demonstrates the superior governance model that this organisation promotes and one that would be the envy of many organisations.

To all of our staff, I thank you for your hard work, commitment and support. Change management is never easy, but I am impressed by the level of understanding that staff have on the necessity of our change to ensure that the long-term viability of this important community asset is maintained for future generations.



**Trust grants
advance education
in Flaxmere**

FLAXMERE LICENSING TRUST'S ANNUAL GRANT OF AROUND \$100,000 TO FIVE SCHOOLS HAS IN RECENT YEARS GONE ON THE PURCHASING OF IPADS, CHROMEBOOKS AND OTHER DEVICES TO HELP IMPROVE ACCESS FOR STUDENTS.



ALLAN POLLARD - CHIEF EXECUTIVE

OUR CORE PURPOSE IS TO ENHANCE THE WELL-BEING OF OUR COMMUNITIES BY DISTRIBUTING PROFITS IN SUPPORT OF COMMUNITY ORGANISATIONS AND EVENTS AND BY OPERATING SUCCESSFUL BUSINESSES THAT BENEFIT FROM COMMUNITY OWNERSHIP

OUR VISION IS TO MAKE
a POSITIVE DIFFERENCE
in our COMMUNITIES

GROUP SURPLUS
PRE DONATIONS
\$9.5 M

4 DIRECTORS REPORT

Principal activities

Trust House Limited is a community enterprise that owns and operates business units in the Wairarapa, Wellington, Kapiti, Tararua and Hawkes Bay regions. Its shareholders are Masterton Community Trust and Flaxmere Licensing Trust. Management services were provided to Trust House Foundation.

Trust House's shareholding comprises:

- Masterton Licensing Trust – 94.26%
- Flaxmere Licensing Trust – 3.97%
- Flaxmere Licensing (Charitable) Trust – 1.77%

The Group owns and operates 11 business units including:

- Licenced premises – hotels, restaurants, bars, cafes and bottle stores
- A Housing estate with 477 homes to rent
- A hydro electricity scheme

Whilst financial improvements were realised throughout the year, trading continues to be difficult in traditional market segments. Cash flows and profits (as detailed in the following table) were sound and the financial position remains strong.

Table 1: Cash flows generated*

YEAR	\$
2017	5,889
2016	5,759
2015	3,482
2014	3,999
2013	3,778

* Group operating profit, plus discontinued operations, plus non-cash expenses.

Charitable distribution

The charitable distribution for the year was \$3.5 million and followed the traditional procedures: local elected representatives call for, or initiate, donations or projects in their areas, and then make the initial decisions on the extent of the grant. These recommendations are then approved, or not, by the Trust House Foundation. All the Regional Net Proceeds Committees have established priorities for their communities and there is a high degree of openness, accountability and consultation.

The various reports in this document record the distribution made to each community.

Directors of the company and remuneration

The Directors, and the remuneration paid to them for the year ended 31 March 2017 were:

	APPOINTED	\$
J W Kershaw (Chairman)	2007	35,000
D B Henry (Chair, Audit Committee)	2005	25,000
D J Baskerville	2011	22,000
L M Griffiths	2013	19,500
M Antonio	2017	3,167
K McNulty	2017	3,167
B J Bourke	Retired 2016	12,933
R Southey	Retired 2016	11,083
	Total	131,850

Relationship with shareholders

There is an agreement with the shareholders that:

- Business plans will be presented in March each year for the financial year beginning 1 April
- Reports on key events and trading compared to business plan targets will be presented quarterly
- Annual accounts will be presented in July
- Consultation will be undertaken during the annual appointment of two Directors
- Discussion will occur on all major transactions and, where necessary, shareholder approval received

There are strong and close links between the various Trusts and Trust House Limited.

Auditors

The Office of the Controller and Auditor-General has appointed Audit New Zealand to conduct the audit of Trust House Limited and its associated licensing and charitable trusts. Audit fees paid to Audit New Zealand for the year ended 31 March 2017 were \$94,500 for Trust House Group.

Audit and risk committee

The members of the committee are DB Henry (Chairman), L Griffiths, JW Kershaw and DJ Baskerville. The Committee met six times during the year.

Use of company information

The Board received no notice during the year from Directors requesting to use Company information received in their capacity as Directors which would not have otherwise been available to them.

Share dealing

No Director acquired or disposed of any interest in shares in the Company during the year.

Interest in transactions

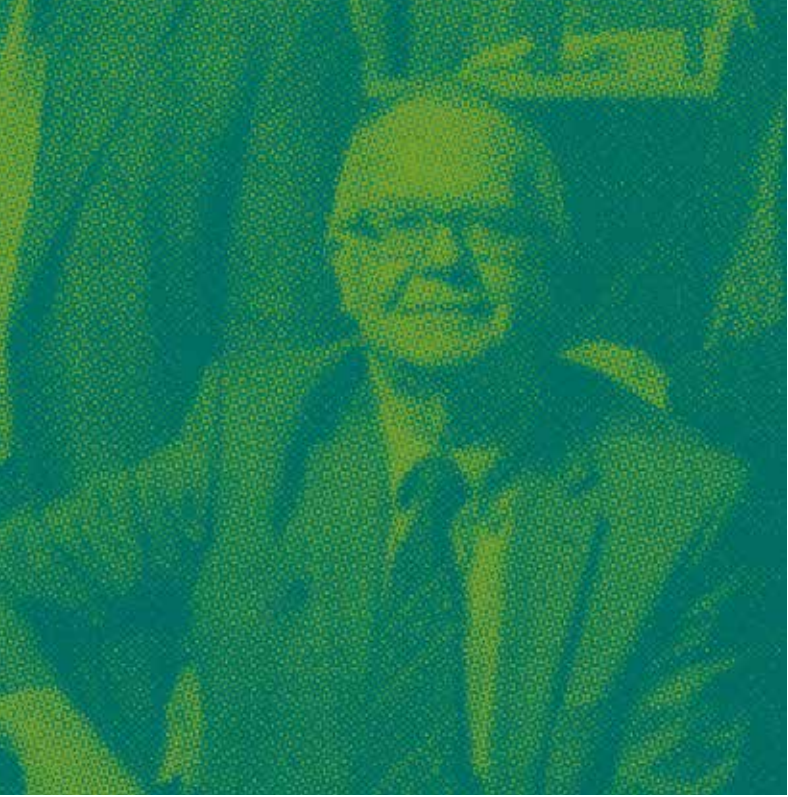
No Director is interested in any transaction (as defined by Section 139 of the Companies Act 1993) or proposed transaction with the Company.

Conclusion

Grant and Sponsorship distribution in excess of \$3.8 million for the year to 31 March 2017 reinforces the importance of the organisation to our communities.

The year has been one of long term focus on our core business model and aligning our asset base to better utilise the resources and skills of the organisation.

Directors are unanimous in their belief that it is imperative that the company remains financially strong so that it may offer real and tangible support to the communities in which we trade.



Trust House Limited senior managers

- RICHARD SIMMONDS** General Manager, Corporate Services
CRAIG THOMSON General Manager, Housing and Infrastructure
CINDRA GRANT General Manager, Gaming and Compliance
LESLEY WRIGHT Executive Administrator
ALLAN POLLARD Chief Executive
JERRY CRUMP General Manager, Operations & Marketing (insert right)



6 OPERATIONAL REVIEW

We continue to incorporate our strategic pillar framework model, as reported last year, in all that we do. The implementation of our turnaround strategies has enabled the creation of a strong foundation and has advanced the growth that we have been striving to achieve over the last few years.

Management, with the support of the Board, put forward a strategic plan to better align Trust House to its core segments; in essence to better utilise the skills and resources of the organisation.

After much discussion and debate, including both current and potential market overviews as well as establishing the organisation’s optimum skills and resources, we determined that core business for the Group is:

- Social/affordable housing
- Pubs with multiple revenue streams
- Hotels

We set about planning on the core business principles as, in the long run, by narrowing our segment base we can further advance the value that we deliver to the communities in which we trade.

We sold the land and buildings at the Greytown Hotel site and all of the assets at the Empire Tavern in Feilding. Featherston Gateway was a very popular business unit for the Group, but did not meet the core business criteria and was successfully sold at the end of March to local operators.

By mid-2017 we will also have sold the last two remaining standalone bottle stores in the Group located in Feilding and Pahiatua respectively.

On the other side we have recently purchased the Post Office Hotel in Pahiatua and Jackson Street Bar and JB’s Downtown Diner (formally Horse & Hound) in Masterton. We will continue to seek opportunities to grow the current portfolio as they present.

Our flagship, Copthorne Solway Park, Wairarapa, is currently under refurbishment with an exciting five year development plan underway. When complete the Group will have invested \$2.5 million back into this key asset.

It is also pleasing to note that the Flaxmere Tavern has undergone a significant refurbishment with the inclusion of a new family restaurant. We look forward to further strengthening this business and the value that it delivers back to its community.

The social/affordable housing portfolio has had a very good year, with occupancy at levels never experienced. Demand is far outstripping supply with the group at almost full capacity with many families and individuals on the waiting list. With the need for more stock, the Board has approved a management recommendation to develop a housing regeneration program and we are currently building 8 new houses on a site that once had only one property on a very large section. This type of innovative thinking will assist with meeting market demands and we will seek more opportunities as they present.

Trading revenue is greatly reduced from the previous year due to asset sales, but the majority of our businesses have improved bottom line performance on the previous year. On premise trading, whilst still challenging, has demonstrated some uplift and we continue to forecast this improvement for the rest of the year.

The cost of doing business continues to increase, with insurance, rates, wages and compliance costs all increasing faster than we can move retail prices to facilitate the reduction in margins. Whilst the markets continue to report low inflation, it concerns me that our costs continue to rise with seemingly continuous regularity.

The support office has also implemented some very effective new systems and processes which, in the mid to long term, will create some real efficiencies for the Group.

Grants approved by Trust House Foundation were \$3.73 million. The reason for the decline from last year was the loss of the Metropolitan bar gaming hall in Porirua, as well as the temporary closure of The Ledge due to some earthquake strengthening works that were urgently required.

Sponsorship from Trust House Limited also reached an all-time high of \$0.34 million. We are in a privileged position to be able to assist so many local clubs, groups, schools and associations in the regions in which we trade. It is one of our main reasons for being and we are delighted that we have increased our support.

Charitable donations were also awarded to Ironmaori who held a wonderful duathlon event, despite the weather, in October where everyone in the community was encouraged to take part. The focus of this event was not winning, but completing. Physical and mental well-being was, and continues to be, the primary objective of the Ironmaori group. This is something that Trust House also supports throughout all of our communities.

Our places

The following assets were sold last year:

- Greytown Hotel (land and buildings)
- Empire Tavern
- Featherston Gateway

The Following assets are under offer:

- Bottle O Pahiatua
- Bottle O Feilding

Group Outlets and segments:

- Kourarau Hydro Electric Scheme
- The Flax Bar & Eatery
- Post Office Hotel, Pahiatua
- Farriers Bar & Eatery
- Jackson Street Bar and JB’s Downtown Diner
- Kuripuni Sports Bar & TAB and Apache Jack’s Family Restaurant
- Copthorne Solway Park, Wairarapa
- Pukemanu Bar & Eatery and E10
- The Ledge
- Social/Affordable Housing Portfolio

Financial performance

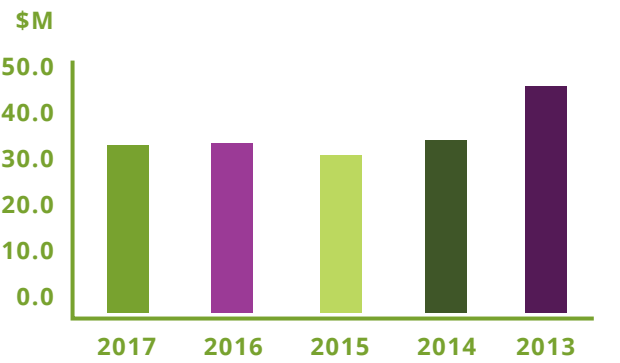
Sales

Table 1

YEAR	\$M
2017	35.4
2016	36.5
2015	34.7
2014	38.8
2013	45.2

Group sales

Group sales decrease as a result of asset sales and outlet closure due to the urgent requirement for building strengthening at The Ledge



Profit and ratios

Table 2

	2017	2016	2015	2014	2013
*Net profit before donations	9.540	6.455	4.868	14.309	0.353

*The major factor for the increased profitability in 2014 was the housing revaluation in accordance the IFRS 13 accounting standard.

Equity (net worth)

Table 3

YEAR	\$M
2017	59.8
2016	53.6
2015	51.0
2014	50.0
2013	37.2

Equity ratio

Table 4

YEAR	%
2017	70.4
2016	66.9
2015	65.1
2014	67.0
2013	59.8

Community support

Giving back to our communities is our primary reason for being. This year Trust House Foundation approved \$3,727,871 in community grants. A total of \$308,996 were either not used or refunded to the Foundation leaving net grants of \$3,418,875.

In addition Trust House Limited made charitable donations of \$63,420 during the year and provided sponsorships to local groups of \$340,715.

Community grants approved

Major Grant recipients from our region were:

Table 6

RECIPIENT	PROJECT	AMOUNT
Bring it to Colombo Trust	Netball court refurbishment	\$270,000
All Kiwi Sports Club	International cycling event	\$120,000
Flaxmere Schools Cluster	School equipment	\$100,000
Wgtn Riding for Disabled	Program assistance	\$50,000
Pukaha Mount Bruce	Asset management	\$40,000
Upper Hutt Women's Centre	Program assistance	\$18,000

IN TOTAL TRUST HOUSE FOUNDATION APPROVED \$3,727,871 INDIVIDUAL GRANTS to CLUBS, ASSOCIATIONS and COMMUNITY GROUPS in the 2017 FINANCIAL YEAR

\$400,000

of SPONSORSHIPS & DONATIONS AWARDED by TRUST HOUSE LIMITED

CHARITABLE DONATIONS WERE AWARDED TO IRONMĀORI WHO HELD A WONDERFUL DUATHLON EVENT, DESPITE THE WEATHER, IN OCTOBER WHERE EVERYONE IN THE COMMUNITY WAS ENCOURAGED TO TAKE PART.

8 OPERATIONAL REVIEW

Health and safety

We adopt an 'our people and our stakeholders come first' philosophy to all health and safety at Trust House.

The Board of Directors receive quarterly reports and audits on our health and safety initiatives and we regularly identify our top risks and how each one will be mitigated within the frameworks of policy and process.

Our Board and senior management visit outlets regularly to ensure that individual health and safety processes are being managed appropriately.

All incidents of injury and near misses are reported at each Board meeting, as this enables a transparent review process to occur in consultation with Directors.

We operate and review a significant hazard register regularly, and have quarterly companywide health and safety meetings with representatives from all business segments. The minutes of each meeting are distributed throughout the Group.

Sustainability

We apply recycling initiatives throughout the Group and are committed to reducing energy consumption whenever possible.

Copthorne Resort Solway Park has also been awarded an Enviro-Gold standard which requires that initiatives are in place to reduce energy, waste and water consumption.

The organisation has also reduced its vehicle fleet, further reducing its carbon footprint to the environment.

We have, and will continue, to undertake a healthy homes programme which focuses on the insulation of our social housing. Currently we have some form of insulation in 86% of our properties. By 2019 all Trust House social houses will be fully compliant with all regulatory state requirements for the insulation of our properties. As a point of note, only 29% of Trust House properties had some form of insulation when we purchased these properties from Housing New Zealand Corporation in 1999.

We continue to work on our open fire project and, by the end of this year, there will be no open fires in our properties with most being replaced with heat pumps. As a point of note, in 1999 we had 396 open fires throughout our housing portfolio, currently we have 33 left to replace.

Cyber security

Last year the Group completed a cyber-security review, which included a full review of all systems and processes as well as staff training. Whilst 100% protection is impossible to achieve, we implemented a strict management plan to strengthen and identify weakness.

We also incorporated new technology and process to assist with protecting the I.T. assets of the Group.

Social media risk is also an area that we have been working on to again better protect the Trust House Group from any potential threat to its people, tangible assets or brand.

(CONTINUED)

Our people

The reengineering of our business model over the last few years has seen a dramatic reduction in staffing numbers. In 2013 Trust House had over 400 employees, in 2017 this number has been reduced to 170 and has greatly assisted with the turnaround in overall performance.

We continue to invest in training and last year the group invested \$115,000 on this very important function. Concentration on customer service, cyber security, compliance and management development were essential areas of focus.

Governance training was also delivered via the Institute of Directors' training programmes and workshops.

I am very lucky to have such a great group of staff to work with who diligently and skilfully perform their duties. The last few years have not been easy and I am very grateful for the support and loyalty that I receive each and every day, despite some of the significant business changes that have been implemented.

The turnaround in organisational performance is unquestionably a result of our staff and the solid financial result that we have reported is a credit to them.

Reinvestment

Whilst the reengineering of our business model to concentrate on core business has been a primary focus, we continue to reinvest back into our existing asset base.

Last year's major investments were:

- Social/Affordable Housing - \$824,000
- Minor capital improvements - \$348,000

Strategic focus

Now that most of the asset reshuffle has been completed, we will focus on improving current business via margin enhancement and improving operational efficiencies in an effort to reduce ever increasing costs of doing business.

Companywide focus will centre on the strategic pillar framework model as we have had some good success since its inception and it is the single document that binds the organisation together as one coherent entity.

I am pleased with what we have accomplished throughout the year, but we still have much to do if we are to be satisfied with the returns that we are reporting from the community assets under our charge.

GRANTS TOTALING
\$3,727,871
RETURNED to THE
COMMUNITY!

HELPING TO PRESERVE FOR FUTURE GENERATIONS. TRUST HOUSE FOUNDATION FEEL INCREDIBLY LUCKY TO BE IN A POSITION TO SUPPORT PUKAHA-MOUNT BRUCE WILDLIFE CENTRE
PUKAHA.ORG.NZ

THE TURNAROUND
in ORGANISATIONAL
PERFORMANCE IS
UNQUESTIONABLY A RESULT
of our STAFF and the SOLID
FINANCIAL RESULT THAT WE
HAVE REPORTED
is a CREDIT TO THEM

JESS MARYCHURCH
WEDDING COORDINATOR
COPTHORNE, SOLWAY PARK, WAIRARAPA

Trust House Foundation

The core purpose of the Foundation is to enhance the well-being of our communities by distributing funds in support of community organisations and events.

The Foundation has class 4 gaming venues from Hawkes Bay to Wellington and we are committed to giving back to the communities from which the funds are raised.

To do this we have four Regional Net Proceeds Committees whose members are voted in by their communities. These committees recommend grants to the Foundation. As the committees are made up of locally elected people, they have knowledge of their communities and are able to ensure the funds go to worthwhile projects.

AREAS	GRANTS AWARDED
Flaxmere	\$599,836
Rimutaka	\$135,962
Porirua	\$1,276,767
Masterton	\$1,715,306

Every year, we grant funding to hundreds of initiatives that make living in our communities more social, more interesting, healthier and safer.

A selection from this year in the table below:

Bring It to Colombo Trust	\$270,000
Destination Wairarapa Inc	\$130,000
Upper Hutt Women's Centre Inc	\$18,000
Flaxmere Schools Cluster	\$100,000
Porirua Festival of the Elements	\$62,194

EDUCATION

\$540,412

RECREATION & SPORT

\$1,252,588

COMMUNITY

\$838,086

HEALTH

\$777,451

ARTS

\$319,334

Venues

- Greytown Hotel
- Island Bay Bar
- Kuripuni Sports Bar & TAB
- Post Office Hotel, Pahiatua
- Rimutaka Sports Bar
- The Farriers Bar and Eatery
- The Flax Bar & Eatery
- The Ledge
- The Pukemanu Bar & Eatery
- Jackson Street Bar
- 888 Sports Bar


**CINDRA GRANT - GENERAL
MANAGER, GAMING AND
COMPLIANCE**

TRUST HOUSE FOUNDATION GRANTS

For the year ended 2017

Access Radio Wairarapa Charitable Trust.....	\$5,000	Diabetes NZ Wellington Inc.....	\$750	Hawke's Bay Multisports Club.....	\$2,507
Adventure School.....	\$5,000	Disability Resource Centre (HB) Trust.....	\$3,000	Hawkes Bay Softball Association.....	\$6,000
Age Concern Flaxmere Inc.....	\$26,630	Discovery School Parent Teacher Association.....	\$5,000	Hawkes Bay Youth Health Trust.....	\$8,000
Age Concern Wairarapa WOOPS Inc.....	\$27,500	Douglas Park School.....	\$1,000	He Huarahi Tamariki.....	\$3,500
Age Concern Wellington.....	\$2,500	DOVE Hawkes Bay.....	\$9,566	Henley Mens Shed Inc.....	\$3,000
Akatarawa Scout Group.....	\$1,500	Dress for Success Wellington.....	\$2,500	Heretaunga Kindergarten Association Inc	
Akatarawa Valley Emergency Response Team.....	\$1,200	Dressage NZ.....	\$2,000	Peterhead Kindergarten.....	\$4,540
All Kiwi Sports Club Inc.....	\$120,000	Dressage Wellington.....	\$2,000	Heretaunga Women's Centre.....	\$4,000
Alzheimers Society Hastings Inc.....	\$5,785	East Coast Rugby Football Club Inc.....	\$1,000	Hibernian AFC Inc.....	\$10,000
Alzheimers Wairarapa Inc.....	\$3,000	English Language Partners NZ Trust - Porirua Centre.....	\$1,408	Hikoi Koutou Charitable Trust.....	\$9,000
Anahera O Te Rangī Charitable Trust.....	\$2,000	Environmental Education for Resource Sustainability Trust.....	\$2,000	Hoe Tonga Waka Ama Pacifica Association.....	\$2,127
Anglican Diocese of Wellington.....	\$1,000	Environmental Education for Resource Sustainability Trust.....	\$2,000	Holy Family School.....	\$5,000
Aotea College.....	\$20,620	Epilepsy Association of New Zealand.....	\$2,000	Hutt Valley Clay Target Club Inc.....	\$5,500
Aotea Residents Association.....	\$1,140	Fab Lab Masterton Trust.....	\$20,000	IHC New Zealand Inc.....	\$990
Aratoi Foundation.....	\$15,000	FAHS - Feilding High School Board of Trustees.....	\$1,500	Ikaroa Ke Te Tonga Maori Netball Inc.....	\$3,000
Aratoi Regional Trust.....	\$35,000	Family Works Hawkes Bay (Presbyterian Support East Coast).....	\$20,000	Include A Charity Trust.....	\$2,000
Arthritis Foundation of NZ Flaxmere.....	\$2,338	Feilding Community Patrol.....	\$10,000	Island Bay Enhancement Trust.....	\$2,000
Arthritis Foundation of NZ Inc.....	\$2,500	Feilding District Rose Society.....	\$500	Island Bay Softball Club Inc.....	\$2,775
Arthritis Foundation of NZ Masterton.....	\$1,000	Feilding Industrial Agricultural and Pastoral Assn.....	\$1,000	It Takes Time.....	\$12,000
Arthritis Foundation of NZ Rimutaka.....	\$1,500	Feilding Playcentre.....	\$3,000	Johnston Park Bowls.....	\$2,000
Arts Culture and Heritage Trust - Toi Wairarapa.....	\$8,000	Feilding Rugby Football Club Inc.....	\$1,000	Kaibosh Food Rescue.....	\$2,000
Athletics Masterton/Wairarapa Inc.....	\$9,000	Festival of the Elements - Porirua Community Arts Council.....	\$62,194	Kaisen Charitable Trust.....	\$2,000
Autism New Zealand Inc Porirua.....	\$5,000	First Five Inc.....	\$1,900	Kapi Mana Insteps Leisure Marching Team.....	\$2,000
Autism Wairarapa Charitable Trust.....	\$6,000	First Five Inc.....	\$1,900	Kapi Mana Netball Centre.....	\$20,000
BabyStart Charitable Trust.....	\$2,000	First Titahi Bay Scout Group.....	\$6,000	Kapi-Mana Music Festival Charitable Trust.....	\$3,000
Big Buddy Mentoring Trust Porirua.....	\$5,000	Flaxmere Baptist Church Community Trust.....	\$4,500	Kerry Fundraisers.....	\$1,300
Big Buddy Mentoring Trust Rimutaka.....	\$1,000	Flaxmere Community Patrol.....	\$17,000	Kidz Need Dadz.....	\$700
Birchleigh Polo.....	\$5,560	Flaxmere Mana Wahine Softball.....	\$500	Kidz Need Dadz Wellington.....	\$888
Birthright (HB) Child and Family Care Trust Flaxmere.....	\$3,000	Flaxmere Maori Wardens.....	\$8,000	King Street Artworks Inc.....	\$13,000
Birthright Wellington Inc.....	\$5,000	Flaxmere Planning Committee.....	\$9,566	Kiwi Adventure Trust.....	\$20,000
Birthright Wellington Inc Porirua.....	\$5,000	Flaxmere Schools Cluster.....	\$100,000	Kiwi Community Assistance Charitable Trust.....	\$22,500
Bishop Viard College.....	\$11,580	Focus Trust Inc.....	\$356	Ko Aroha Tuatahi Childcare Centre.....	\$2,500
Blue Light Ventures.....	\$6,000	Frangee Pangee Committee.....	\$3,000	Kuranui College Board of Trustees.....	\$850
Bonfire Community Trust.....	\$5,000	Friends of Mana Island Inc.....	\$20,000	Lansdowne Cricket Club Inc.....	\$2,000
Bowls Wairarapa Inc.....	\$2,000	Friends of St Marys.....	\$2,500	Learn and Live Camp Anderson.....	\$2,000
Boys To Men Mentoring (NZ).....	\$5,000	Friends of the ANZAC Bridge.....	\$3,000	Learning and Growing Together Trust.....	\$1,000
Brain Injury Association (HB) Inc Flaxmere.....	\$4,000	Friends of the Hospital.....	\$1,000	Leg-Up Trust.....	\$20,000
Brain Injury Association Central Districts Inc Masterton.....	\$1,000	Friends of the Park Inc.....	\$4,000	Life Education Trust Hawke's Bay.....	\$5,000
Brandon Intermediate Board of Trustees.....	\$5,000	G O Y A N Z Inc.....	\$1,000	Life Education Trust North Wellington.....	\$15,000
Breastfeeding Wairarapa.....	\$3,000	Girl Guiding New Zealand.....	\$712	Linden School.....	\$3,000
Breathe Hawke's Bay.....	\$1,567	Gladstone Womens Hockey Club.....	\$740	Lions Club of Greytown Charitable Trust.....	\$2,000
Bring It To Colombo Trust.....	\$270,000	Glenview School.....	\$5,000	Lions Club of Mana Charitable Trust.....	\$8,928
Bush Rock and Roll Club.....	\$500	Golden Shears International Shearing		Lions Club of Martinborough Charitable Trust.....	\$1,000
Camp Quality Wellington/Central Districts.....	\$4,500	Championships Society Inc.....	\$40,000	Lions Club of Rimutaka Inc.....	\$2,164
Cancer Society of NZ Wgtn Division Inc.....	\$2,500	Got Drive Community Trust.....	\$19,580	Literacy Aotearoa Porirua.....	\$3,500
Cannons Creek School.....	\$5,000	Greenacres School.....	\$3,170	Literacy Wairarapa Inc.....	\$4,000
Cannons Creek Youth Charitable Trust.....	\$3,000	Greytown Bowling Club Inc.....	\$1,000	Little Sprouts Charitable Trust.....	\$7,000
Capital Zone Basketball Trust.....	\$4,000	Greytown Early Years Inc.....	\$2,000	Louise Perkins Foundation - Sweet Louise.....	\$1,000
CareVets Charitable Foundation Trust.....	\$20,000	Greytown Lioness Club.....	\$800	Mafutaga Tupulaga Tokelau Niu Hila.....	\$18,333
Carterton Community Courthouse Trust.....	\$2,000	Greytown Little Theatre Society.....	\$10,000	Mahinawa Specialist School and Resource.....	\$2,460
Carterton Community Toy Library.....	\$1,500	Greytown Swimming Club.....	\$1,500	Mainly Music New Zealand Trust.....	\$1,500
Carterton Film Society.....	\$1,200	Hampton Hill School.....	\$5,000	Makoura College Board of Trustees.....	\$16,700
Carterton Swimming Club Inc.....	\$2,000	Hanley Productions Ltd.....	\$2,500	Makoura Community Early Childhood Centre.....	\$500
Castlepoint Fishing Club Inc.....	\$859	Hastings Artists Group Inc.....	\$4,000	Makoura Community Early Childhood Centre.....	\$500
Central Wairarapa Indoor Bowls Association.....	\$10,000	Hastings District Council.....	\$67,000	Mana Amateur Athletic Club.....	\$4,682
Choirs Aotearoa NZ Trust.....	\$3,000	Hastings Foodbank Trust.....	\$5,000	Mana College.....	\$11,279
Citizens Advice Bureau Porirua Inc.....	\$8,000	Hastings Group Riding for the Disabled.....	\$3,000	Mana Kayak Racing Club Inc.....	\$7,500
Community Budgeting Trust (Wairarapa) Inc.....	\$1,500	Hastings West Ross Shield.....	\$3,041	Mana Montessori Preschool Inc.....	\$2,500
ConArt Gallery and Studios Inc.....	\$1,200	Hawaiki Nui Tua Rua Waka Ama Club.....	\$20,000	Mana Parents Centre Inc.....	\$1,700
Corinna School.....	\$3,500	Hawkes Bay Agricultural and Pastoral Society.....	\$1,500	Mana Special Needs Childrens Trust.....	\$10,000
Cranford Hospice (Presbyterian Support East Coast).....	\$25,000	Hawkes Bay Cricket Association Inc.....	\$2,000	Manawatu Cricket Association Inc.....	\$720
Creative Hastings Inc.....	\$7,600			Mangatarere Restoration Society.....	\$1,500
Cricket Wellington Inc.....	\$10,000			Maoribank School Board of Trustees.....	\$1,600
Dalefield Hockey Club.....	\$25,000			Maraeroa School.....	\$4,598
Destination Wairarapa Inc.....	\$130,000			Marist Rugby Football Club Masterton Inc.....	\$3,000
Deuce Days.....	\$2,000			Marsden Whitby Parents Association Inc.....	\$513
				Martinborough Events Trust.....	\$3,000

over **500** organisations have received our support

In 2016 /2017 grant awards totalled
\$3,727,871



TRUST HOUSE FOUNDATION GRANTS (CONTINUED)

Martinborough Golf Club Inc	\$3,000	Papakowhai School	\$5,000	Red Star Womens Hockey.....	\$800	Tamatea Rugby League Club Inc	\$7,502	Upper Hutt City of Song Charitable Club	\$9,801	Wellington Region ME/CFS Support Group Inc.....	\$1,000
Martinborough Rugby Football Club Inc.....	\$1,100	Paremata Plimmerton Softball Club	\$3,000	Redwood Club.....	\$2,000	Tawa Association Football Club Inc.....	\$3,000	Upper Hutt Community Youth Trust	\$1,500	Wellington Regional Asthma Society Inc	\$1,830
Martinborough Squash Club Inc.....	\$3,500	Parent to Parent Wellington Region	\$1,500	Redwood School.....	\$3,820	Tawa Basketball Club Inc.....	\$1,000	Upper Hutt Musical Theatre Inc.....	\$1,100	Wellington Regional Orchestra Foundation	\$827
Mary Potter Hospice	\$20,000	Parkinsonism Society Wairarapa Division Inc	\$8,000	Rimutaka Gymsports Inc.....	\$9,000	Tawa College Board of Trustees.....	\$19,200	Upper Hutt Parents Centre Inc.....	\$1,800	Wellington Riding For The Disabled Assn Inc	\$50,000
Masterton A & P Association	\$4,000	Parkinsonism Society Wellington Inc	\$2,500	Rimutaka Inline Hockey Club Inc.....	\$1,500	Tawa Intermediate School.....	\$5,000	Upper Hutt Rams Rugby Football Club.....	\$5,500	Wellington Rugby Football Union Inc.....	\$8,000
Masterton Amateur Theatrical Society Inc (MATS)	\$15,000	Pauatahanui Golf Club Inc.....	\$5,000	Riversdale Beach Surf Lifesaving Club Inc.....	\$2,500	Tawa Linden Playcentre.....	\$1,356	Upper Hutt Smallbore Rifle Club Inc.....	\$1,500	Wellington Rugby League.....	\$8,000
Masterton Association Football Club Inc.....	\$1,500	Pauatahanui Pony Club Inc.....	\$4,056	RMH Auckland Trust	\$1,600	Tawa Rugby Football Club Inc.....	\$15,000	Upper Hutt Women's Centre Inc	\$18,000	Wellington SPCA Inc	\$10,000
Masterton Axemens Club	\$2,000	Pauatahanui Preschool Inc	\$2,756	RNZPS Hawke's Bay Area Inc.....	\$32,000	Tawa School Board of Trustees	\$5,000	Variety - The Childrens Charity	\$2,000	Wellington Speedway Society Inc	\$3,850
Masterton Bowling Club Inc.....	\$2,000	Pauatahanui Preschool Inc	\$1,570	Rotary Club of Feilding	\$1,000	Tawa Squash Club Inc.....	\$5,000	Virtuoso Strings Charitable Trust	\$11,000	Wellington Vintage Machinery Inc	\$3,470
Masterton Community Church.....	\$1,000	Pauatahanui School Board of Trustees	\$2,335	Rotary Club of Masterton Charitable Trust	\$1,000	Tawa Youth and Families Trust.....	\$2,000	VOCAL FX Inc	\$3,000	Wellington Volunteer Centre Masterton	\$6,000
Masterton Community Toy Library Inc	\$1,500	Plateau School	\$1,600	Rotary Club of Upper Hutt	\$1,500	Tawalin Indoor Bowls Club	\$11,000	Volleyball Hawkes Bay.....	\$650	Wellington Volunteer Centre Porirua	\$6,000
Masterton District Brass Band Inc.....	\$5,000	Plimmerton Bowling Club Inc.....	\$5,000	Royal Forest & Bird Protection Society of NZ Inc	\$2,500	Tawa-Lyndhurst Tennis Club.....	\$10,000	Volleyball NZ.....	\$5,000	Wellstop Inc	\$1,000
Masterton District Council	\$62,000	Plimmerton Bridge Club	\$1,000	Royal New Zealand Foundation of the Blind Flaxmere.....	\$1,000	Te Ara Moana Trust	\$10,000	Waiapu Anglican Care - Growing Through Grief HB.....	\$621	Wesley Wellington Mission Inc	\$5,000
Masterton Eketahuna Pro-am.....	\$3,500	Plimmerton Residents Association Inc.....	\$23,300	Royal New Zealand Foundation of the Blind Masterton.....	\$2,000	Te Aranga Marae Trust	\$12,233	Wainuioru School.....	\$1,000	Western Suburbs Soccer Club	\$20,000
Masterton Family Education and Support Centre.....	\$1,730	Plimmerton School Board of Trustees.....	\$5,000	Royal New Zealand Foundation of the Blind Porirua	\$2,000	Te Awhina Cameron Community House Inc	\$15,000	Wairarapa Agricultural & Pastoral Society Inc	\$4,000	Western Suburbs Soccer Club	\$40,000
Masterton Foodbank Inc.....	\$6,000	Porirua Basketball Association.....	\$10,000	Royal New Zealand Foundation of the Blind Rimutaka	\$2,000	Te Kura Maori o Porirua.....	\$5,000	Wairarapa and Southern Hawkes Bay Life Education Trust.....	\$12,500	Weston Sports	\$2,400
Masterton Golf Club.....	\$4,000	Porirua Budget Service Inc.....	\$10,000	Royal New Zealand Plunket Society - Greytown.....	\$2,000	Te Marua Golf Club Inc	\$10,000	Wairarapa Arts Festival Trust	\$25,000	Westside Playcentre	\$1,000
Masterton Miniature Train Society Inc.....	\$900	Porirua City Aquatics.....	\$4,000	Royal New Zealand Plunket Society - Upper Hutt Branch	\$5,000	Te Whanganui A Tara Maori Squash Assn Inc	\$10,000	Wairarapa Balloon Society Inc.....	\$10,000	Whaiora Whanui GP Services.....	\$2,500
Masterton Primary School	\$2,000	Porirua City Band Youth Trust	\$1,000	Royal New Zealand Plunket Society - Wellington/Wairarapa.....	\$1,600	Te Whare Karakia Ministries Charitable Trust	\$4,000	Wairarapa Bike Festival Charitable Trust	\$3,000	Whanau Manaaki Kindergartens - Adventure.....	\$2,500
Masterton Racing Club Inc.....	\$4,000	Porirua City Classic Touch.....	\$5,000	Ruahine Kindergarten Association	\$1,000	Tennis Central Region Inc	\$2,000	Wairarapa Bush Rugby Football Union Inc	\$50,000	Whanau Manaaki Kindergartens - Ascot Park.....	\$2,500
Masterton Red Star Rugby Club.....	\$5,000	Porirua City Tag	\$6,000	Russell School.....	\$4,510	The Carter Society Inc	\$20,000	Wairarapa Bush Rugby Referees Association Inc	\$1,000	Whanau Manaaki Kindergartens - Awatea.....	\$1,999
Masterton Swimming Club Inc.....	\$5,000	Porirua City United Softball Club Inc.....	\$2,800	SADD Conference.....	\$2,000	The Family Space Charitable Trust.....	\$750	Wairarapa Car Club Inc	\$20,000	Whanau Manaaki Kindergartens - Brian Webb	\$2,500
Masterton Tennis Centre.....	\$5,000	Porirua College Board of Trustees.....	\$17,660	Sailability Wellington Trust	\$10,282	The Hearing Association - Hastings Branch Inc	\$5,000	Wairarapa Citizens Advice Bureau.....	\$1,500	Whanau Manaaki Kindergartens - Discovery.....	\$1,600
Masterton Young Citizens Club Inc	\$1,167	Porirua East School	\$3,659	Saint Lukes Church.....	\$5,000	The House of Grace Trust Inc	\$2,000	Wairarapa College	\$1,000	Whanau Manaaki Kindergartens - Etu Ao	\$2,500
Mobility Assistance Dogs Trust	\$5,000	Porirua Foundation Inc	\$18,000	Saint Matthews Parish.....	\$2,000	The Hutt Valley Singers Inc	\$360	Wairarapa Community Centre Inc	\$3,000	Whanau Manaaki Kindergartens - Katoa	\$2,500
Muscular Dystrophy Assn Wellington.....	\$1,000	Porirua Grand Traverse Trust	\$10,000	Scout Association of NZ - Hutt Valley Gang Show	\$5,000	The Lighthouse Church Charitable Trust	\$2,000	Wairarapa Community Law Centre Inc	\$4,500	Whanau Manaaki Kindergartens - Maraeroa.....	\$2,162
National Hockey Stadium	\$20,000	Porirua Hospital Chapel.....	\$20,000	Scout Association of NZ 1st Carterton	\$2,000	The Lions Club of Featherston Charitable Trust	\$1,000	Wairarapa Community Patrols	\$8,000	Whanau Manaaki Kindergartens - Moira Gallagher	\$2,500
Netball Wairarapa Inc	\$20,000	Porirua Living Without Violence	\$10,000	Seniornet Upper Hutt Inc	\$1,500	The Masterton Art Club Inc	\$750	Wairarapa Cricket Association Inc.....	\$20,000	Whanau Manaaki Kindergartens - Nuanua.....	\$2,500
New Zealand China Friendship Society Inc - Wairarapa.....	\$10,000	Porirua Rowing Club	\$10,000	Sexual Abuse Prevention Network	\$2,618	The Mauriceville/Kopuaranga Fair Assn Inc	\$750	Wairarapa Diamonds Leisure Marching Team	\$968	Whanau Manaaki Kindergartens - Papakowhai.....	\$2,500
New Zealand Deer Stalkers Association Wairarapa Branch ..	\$1,200	Porirua School Board of Trustees.....	\$5,000	Shear History Trust	\$500	The New Zealand Sport & Vintage Aviation Society Inc	\$6,000	Wairarapa Dressage Group.....	\$1,000	Whanau Manaaki Kindergartens - Paremata.....	\$2,500
New Zealand Equestrian Federation Inc - Wairarapa	\$6,500	Porirua Whanau Centre Trust	\$10,000	Soul City Church Trust	\$10,000	The Open Home Foundation.....	\$8,000	Wairarapa Fern & Thistle Pipe Band	\$1,050	Whanau Manaaki Kindergartens - Plimmerton	\$2,500
New Zealand Hockey Federation Inc.....	\$20,000	Postgate School Board of Trustees	\$5,000	South End School Board of Trustees	\$1,500	The Parenting Place - Attitude Division Masterton	\$1,000	Wairarapa Free Budget Advisery Services	\$15,150	Whanau Manaaki Kindergartens - Pukerua Bay	\$2,500
Ngati Kahungunu Iwi Inc.....	\$10,000	Pre Shears Woolhanding Championships.....	\$904	South Wairarapa District Council.....	\$500	The Parenting Place - Attitude Youth Division Flaxmere....	\$1,000	Wairarapa Hockey Association Inc	\$5,000	Whanau Manaaki Kindergartens - Tairangi	\$1,719
Ngati Toa School.....	\$5,000	Pregnancy Help Porirua.....	\$5,000	SPACE NZ Trust.....	\$1,500	The Parenting Place Porirua.....	\$2,000	Wairarapa Inter-Collegiate Speech Competition	\$1,000	Whanau Manaaki Kindergartens - Tawa Central.....	\$2,500
Ngatittoa Tennis Club Inc.....	\$3,000	Presbyterian Support Central.....	\$2,000	Special Olympics New Zealand	\$1,500	The Road Forward Trust	\$2,000	Wairarapa Jetsprint Club Inc	\$2,000	Whanau Manaaki Kindergartens - Titahi Bay	\$2,415
North City Country Music Club Inc	\$2,000	Presbyterian Support Central.....	\$2,000	Sport Wellington	\$5,000	The Songbirds.....	\$1,000	Wairarapa Kennel Association Inc.....	\$1,000	Whanau Manaaki Kindergartens - Toru Fetu	\$2,500
North City Cricket Club Inc.....	\$10,000	Presbyterian Support East Coast - Family.....		Sri Lanka Association of New Zealand (SLANZ) Inc.....	\$500	The Swimming Trust of Wellington.....	\$2,500	Wairarapa Mathematics Association	\$1,000	Whanau Manaaki Kindergartens - Tui Park	\$2,500
North Street School	\$1,000	Works Hawkes Bay (FWHB).....	\$9,000	Sri Lanka Senior Association Inc NZ	\$1,000	The Upper Hutt Highlanders Inc	\$3,000	Wairarapa Multi Sports Stadium Trust	\$17,500	Whanau Manaaki Kindergartens - Waitangirua	\$2,500
Northern United Rugby Football Club Inc.....	\$40,000	Prima Volta Charitable Trust.....	\$8,000	Sri Lanka Senior Association Inc NZ	\$500	The YMCA of Greater Wellington Inc	\$5,000	Wairarapa Racing Club Inc	\$5,000	Whare Manaaki Inc	\$11,017
NZ Council of Victim Support Groups Hastings	\$3,000	Prison Chaplaincy Service.....	\$2,379	St Francis Xavier School	\$2,660	Tinui School.....	\$500	Wairarapa REAP	\$35,000	Whare Ora Trust	\$8,000
NZ Council of Victim Support Groups Porirua.....	\$2,500	Pukaha Mount Bruce Board	\$40,000	St James Union Parish	\$476	Titahi Bay Amateur Athletics Club	\$20,000	Wairarapa Rescue Trust.....	\$10,000	Wharekaka Trust Board Inc.....	\$10,000
NZ Council of Victim Support Groups Upper Hutt	\$1,000	Pukerua Bay Community Playgroup	\$2,475	St John Wairarapa District	\$5,000	Titahi Bay Intermediate School	\$3,042	Wairarapa Safer Community Trust.....	\$5,000	Whitby Residents Association Inc.....	\$10,000
Oasis Trust.....	\$4,000	Pukerua Bay Plunket Toy Library	\$1,843	St Pius X School	\$2,322	Titahi Bay North School	\$4,840	Wairarapa Singers	\$2,000	Whitby Tennis Club	\$1,965
Ocean Beach Kiwi Surf Life Saving Club Inc.....	\$5,850	Pukerua Bay School	\$2,730	St Theresa's School Board of Trustees	\$2,830	Titahi Bay School Board of Trustees	\$5,000	Wairarapa Supergrans Trust.....	\$1,000	Whitford Brown Community Trust.....	\$9,000
Omahu Huia Rugby League Club	\$4,500	Purena Koa Rehua Youth Services.....	\$7,800	St Vincent De Paul Society	\$5,000	Titahi Golf Club Inc	\$15,000	Wairarapa United Football Club Inc.....	\$17,000	Wings Over Wairarapa Community Trust.....	\$80,000
Orchestrate Hawkes Bay.....	\$3,000	Rangikura School	\$5,000	Stopping Violence Services Wairarapa.....	\$8,000	Titahi Golf Club Inc	\$10,000	Wairarapa Women's Centre	\$2,500	WOOPS A Daisies Leisure Marching Team.....	\$800
Organisation	Amount	Rebels Boxing Porirua Inc.....	\$2,500	Street Youth Ministries Trust Inc.....	\$600	Toa Hockey Club	\$1,500	Waiwaste Food Rescue	\$2,000	Youth Cultures and Community Trust	\$4,000
Oroua Badminton Association Inc.....	\$400	Red Star Cricket Club.....	\$2,000	SuperGrans Charitable Trust.....	\$2,000	Toa Netball Club	\$1,109	Wellington Free Ambulance Service Inc Masterton	\$20,000	Youth Development Trust Hawkes Bay.....	\$5,000
Pacific Heat Sports Club	\$1,520	Red Star Sports Association Inc.....	\$3,000	Supertonic Inc.....	\$500	Totara Park Playcentre.....	\$1,891	Wellington Free Ambulance Service Inc Porirua.....	\$20,000	Youth Development Trust Wellington.....	\$2,500
Pahiatua On Track Inc	\$2,000	Red Star Veterans Table Tennis Club.....	\$2,000	Surf Life Saving New Zealand.....	\$500	Trentham Boxing Club	\$1,626	Wellington Gliding Club Inc	\$10,000	Youthline (Wellington) Inc	\$2,000



TOTAL \$3,727,871

THE YEAR AHEAD

THE FOCUS OF THE GROUP WILL BE TO CONTINUE THE VALUE THAT IT DELIVERS BACK INTO THE COMMUNITIES IN WHICH WE TRADE

The realignment of our business segments to take advantage of the resources and skills that we have will ensure a strong Trust House Group for the year ahead.

Both operating profit (excluding capital gains and extraordinary items) and Trust House Foundation grant distributions are forecast to increase in the coming year.

This is a result of the work that has been completed over the last few years and we forecast continued growth for many years to come.

We will also continue to sponsor and supply charitable distributions and sponsorships to the many clubs, groups and association that we have supported throughout the year.

2018

Thank you

Staff, Trustees, Directors and management are committed to ensuring that the attainment of our core purpose and vision is the primary objective of the Group.

We do this through respect, innovation, collaboration, commitment and with humility.

We thank our people for the incredible contribution that they make to the organisation and to our communities who we serve.

Trust House Limited Directors

- JOCK KERSHAW Chairman
- DAVID HENRY
- DONALD BASKERVILLE
- KIERAN M'ANULTY
- LUCY GRIFFITHS
- MENA ANTONIO

Trust House Foundation Trustees

- JOCK KERSHAW Chairman
- KEN KIBBLEWHITE
- KARL TAUCHER
- LITEA AH HOI
- LUCY GRIFFITHS
- MENA ANTONIO
- TOM JONES

Grant shifts motorsport park up a gear

EFFORTS TO BUILD A "MOTORSPORT PARK" IN MASTERTON ARE GAINING MOMENTUM WITH TRUST HOUSE LTD GETTING IN BEHIND THE PROJECT. DRIVEN BY THE WAIRARAPA CAR CLUB (WCC), THE VISION IS TO DEVELOP A FACILITY ADJACENT TO THE MASTERTON MOTORPLEX DRAG RACING TRACK AT THE SOUTHERN END OF THE HOOD AERODROME.

More home comforts for Open Home Foundation

WHILE IT'S NO SUBSTITUTE FOR A REAL HOME, THE OPEN HOME FOUNDATION'S MASTERTON BASE ON LINCOLN ROAD IS THE NEXT BEST THING FOR AT RISK CHILDREN. SINCE 1994 OPEN HOME HAS BEEN USING THE TWO-STOREY BUILDING AS PART OF ITS CARE AND PROTECTION OF VULNERABLE CHILDREN.

Trust House Recreation Centre

TRUST HOUSE IS DELIGHTED TO ANNOUNCE THAT IT HAS BEEN AWARDED THE NAMING RIGHTS FOR THE MASTERTON RECREATION CENTRE WHICH WILL NOW BE NAMED TRUST HOUSE RECREATION CENTRE.

Restorative justice paying off for college

A MASTERTON SECONDARY SCHOOL'S USE OF AN ALTERNATIVE TO THE TRADITIONAL PUNITIVE RESPONSES TO WRONGDOING, IS CONTINUING TO WIN THE SUPPORT OF TRUST HOUSE LTD. RESTORATIVE JUSTICE IS BASED ON THE IDEA THAT A PUPIL NEEDS TO TAKE RESPONSIBILITY FOR HIS OR HER ACTIONS.

HEATHER SKIPWORTH:
IRONMAORI DUATHLON 2016
IRONMAORI.COM

Jock Kershaw Chairman



Mena Antonio



Lucy Griffiths



Litea Ah Hoi



David Henry



Karl Taucher



Kieran M'Anulty



Donald Baskerville



Ken Kibblewhite



Tom Jones



PHOTO: SCHOOL HOLIDAY/EDUCATION PROGRAMME ARATOI WAIRARAPA MUSEUM OF ART AND HISTORY.

CURRENT IWI EXHIBITION TE MARAE O RONGOTAKETAKE - REDRESSING OUR KAHUNGUNU HISTORY.

THE EXHIBITION IS ON UNTIL 3 SEPTEMBER AND RECEIVED MAJOR FUNDING SUPPORT FROM TRUST HOUSE.

FOR MORE INFORMATION PLEASE VISIT: ARATOI.ORG.NZ



COMMERCIAL STRENGTH FOR SOCIAL GOOD



TRUST HOUSE LTD
trusthouse.co.nz

**TRUST HOUSE FOUNDATION FEEL INCREDIBLY
LUCKY TO SUPPORT PUKAHA-MOUNT BRUCE
NATIONAL WILDLIFE CENTRE. WE THANK THEM
FOR THIS PHOTO CONTRIBUTION.
PUKAHA.ORG.NZ**